

# Development in Cheverly Metro Vicinity

## TOWN OF CHEVERLY

1

Over the past five years, each of the 9 houses or parks in this area have been developed, redeveloped or extensively renovated.

2

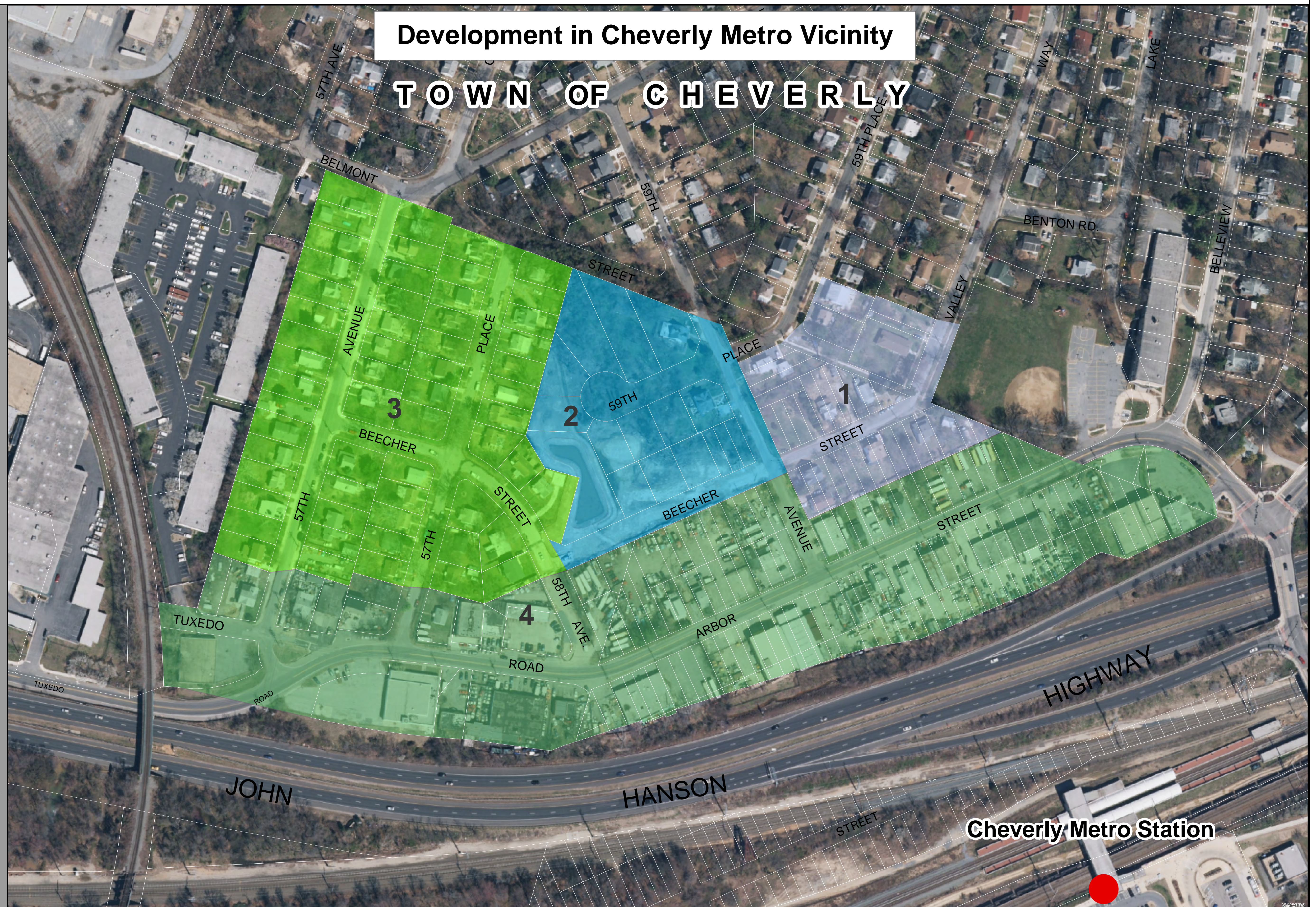
Property comprises Cheverly West (<http://cheverlywest.com>), which consist of a 3.5 acre planned development one quarter mile from the Cheverly Metro Station. Completion of site work is anticipated in the next 90 days with development of housing to commence shortly thereafter.

3

Area is seeing significant development, redevelopment and rebuilding of existing housing

4

MNCPPC & Torti Gallas are currently updating the existing Sector Plan to reflect mixed use development in close proximity to the Cheverly Metro and anticipate completing this update in mid or late 2017, and are hopeful of development occurring shortly thereafter.



The Maryland - National Capital Park and Planning Commission

Prince George's County Planning Department

Geographic Information System

Date Printed:  
8/13/2015

Keegan Clifford

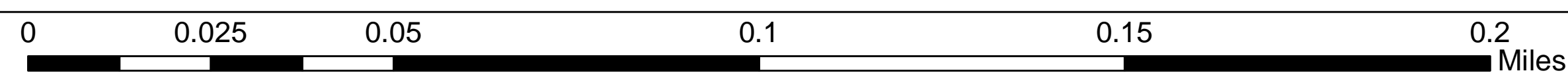
Datum Info:  
MD State Plane Feet  
NAD-83 and NAVD-88

### Legend

- Significant Recent Development/Redevelopment
- Residential Construction Late, 2015
- Ongoing & Future Development/Redevelopment
- Planned Metro Proximate/Mixed Use Development



Metro Station



This map may not be reproduced, stored in a retrieval system, or transmitted by any form, including electronic or by photo reproduction, without the express written permission of The Maryland-National Capital Park and Planning Commission. For more information, contact the Prince George's County Planning Department in Upper Marlboro, Maryland.

N

